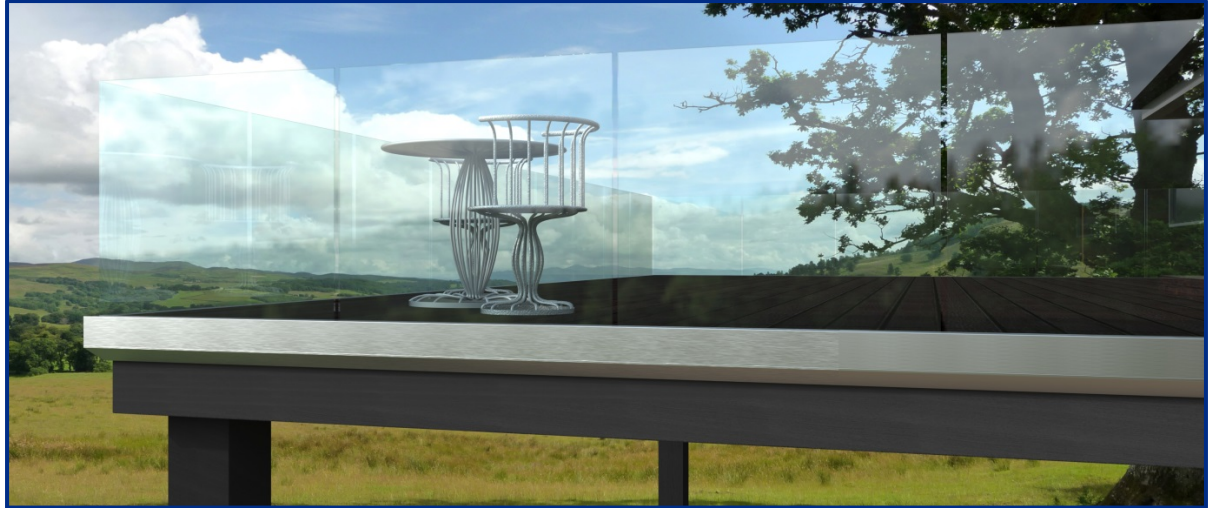


Guide for: Frameless Glass Balustrade Systems



We have designed Liveconfigurator™ to be a step by step process to keep it simple to use.

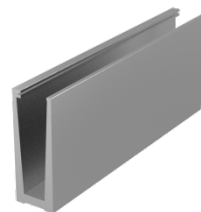
Liveconfigurator™ is in continuous development and we plan to continue to add more of our products and configurations in the years to come. We have attempted to keep Liveconfigurator™ simple to use whilst offering a wide choice of options. You can usually see a picture of your selection which will change as you work.

Our aim is to have a full range of alternative systems of Frameless Glass Balustrades and our Wedge-Loc™ Slim Channel is available for configuration.

WEDGE-LOC™ SYSTEM TESTED TO BS6180

FEATURES:

- Satin anodised finish
- Stainless cladding not required
- Great value
- Quick to install
- Pre-drilled channel fixing holes
- Height to glass when packer fitted is 13mm
- Packer height 2mm



Base Fix Channel

N.B. LENGTH: Always enter your lengths **in millimetres**. This is the important part as the total length you enter is the size you will get.

Liveconfigurator™ will run through a list of simple questions. As you make your choices you will notice that the image alongside will change to show the parts you have selected.

You may notice that some questions do not allow you a choice. This is because your selection will not configure in this way, and it will show a message saying:

Option not available click NEXT to continue

You may also find useful **information**, such as this example:



Or **warnings** like this.



IMPORTANT: For example, if you are fitting up to a wall then the **OVERALL** length will be the wall to wall measurements on a straight length. If your system has corners, then it will be the measurement to the centre of the corner which is important.

Please make sure you are happy with your selections before continuing by clicking on the **NEXT** button.

ACCESSORIES: We now offer you a choice of useful accessories. They include the screws and fixing bolts which you may need with most systems. If you do not wish to run through all the accessories, you can click on **SKIP ACCESSORIES** to fill in your details and collect your quote.

If you have already **REGISTERED**, please tick the box so you don't need to fill in the whole form. You will then be asked to tick the box to confirm that the measurements you provided are correct.

Finally: Within minutes you will be sent an email with your quote, along with a set of technical drawings. To place an order please contact your local sales team who will be happy to advise.

Any Questions?

If you have any questions, please ask us. We are always happy to help if we can.

Call: 01708 398 020
Email: info@liveconfigurator.co.uk