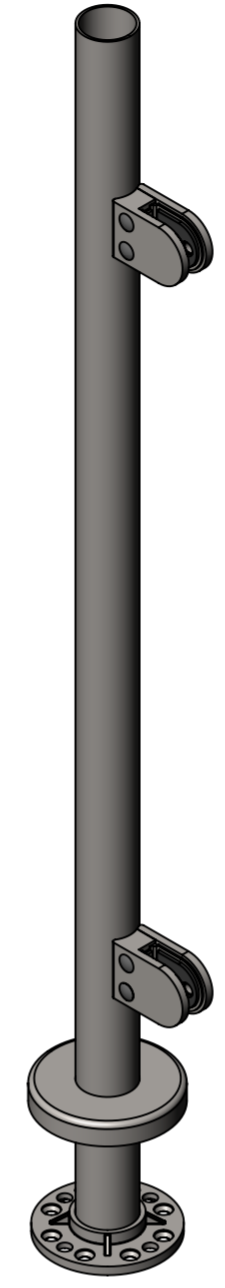
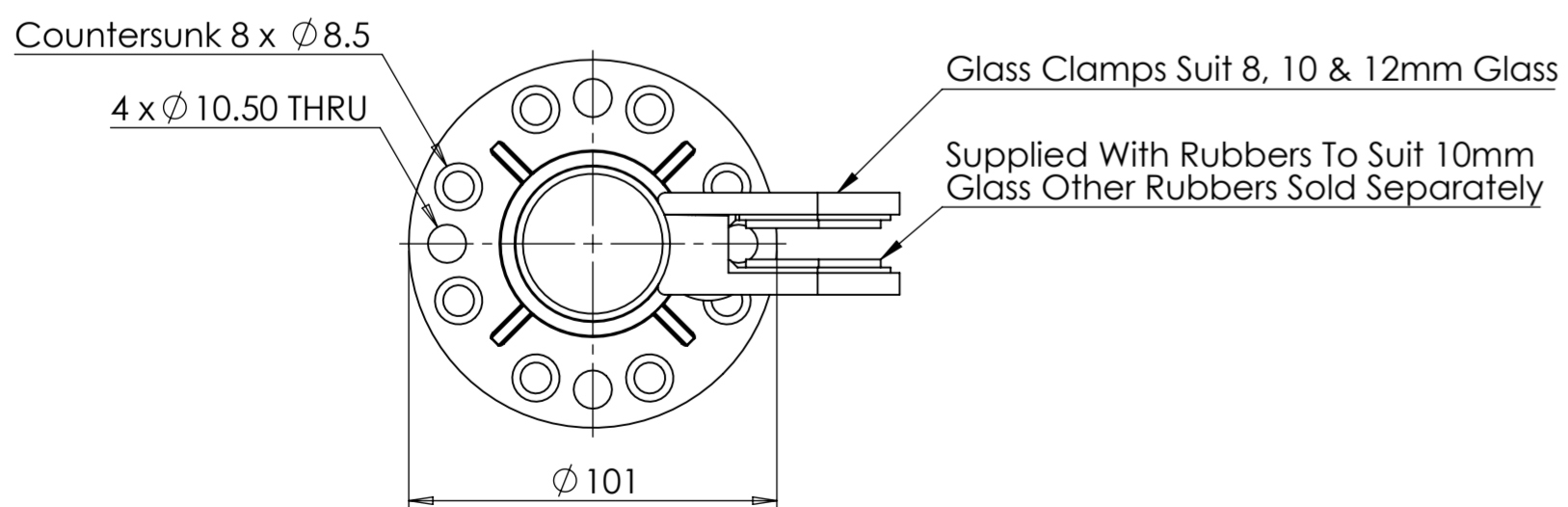


### Base Plate Detail

Scale 1 : 2



Total Height Achieved	Optional End Part Code	Picture
983 mm	Flat Top - 1806214C	
984 mm	Raised Top - 1806215C	
999 mm	Dome Top - 1806216C	

### Balustrade Heights Achieved With Different Fittings:

Total Height Achieved	Optional End Part Code	Picture
1100 mm To The Top Rail	Adjustable Spigot - 1806312CC	
1100 mm To The Top Rail	Fixed Spigot - 1806310CC	
1100 mm To The Top Rail	Corner Fixed Spigot - 1806311CC	
1025 mm To The Top Rail	Tube Adaptor - 1806313CC	
1029 mm To The Top Rail	Long Tee - 1806205C	
1029 mm To The Top Rail	3 Way Corner - 1806204C	
1058 - 1167 mm To The Top Rail	Adjustable Sleeve Fit - 1806316CC	
1100 mm To The Top Rail	Corner Support Bracket - 1806311CCA	
1100 mm To The Top Rail	Handrail Saddle, Adjustable Spigot - 1809504C	

Item No.	Part Code	Description	Material	Qty.
1	1806228C	Welded on Round Base Plate With 'O' Ring & Cover	316 Stainless	1
2	1806401C	Round Back Glass Clamps	316 Stainless	2



**Pro-Railing**  
Tel: 0121 565 8282  
Email: prorailing@brundle.com  
Web: www.prorailing.co.uk

NOTES:  
Customer Drawing Information

DESCRIPTION:  
42.4mm Base Fix Assembled End Post

PART NO:  
1806791C

DWG NO:  
N/A

A2

NAME	DATE	REVISION
DRAWN LT	15/09/2016	
CHECKED EF	25/10/2016	H

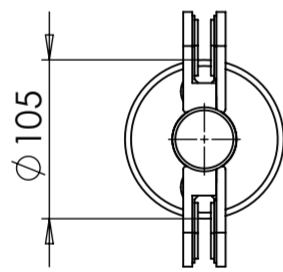
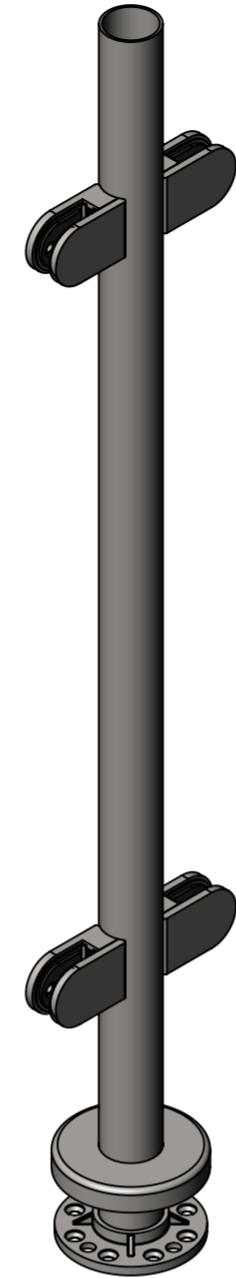
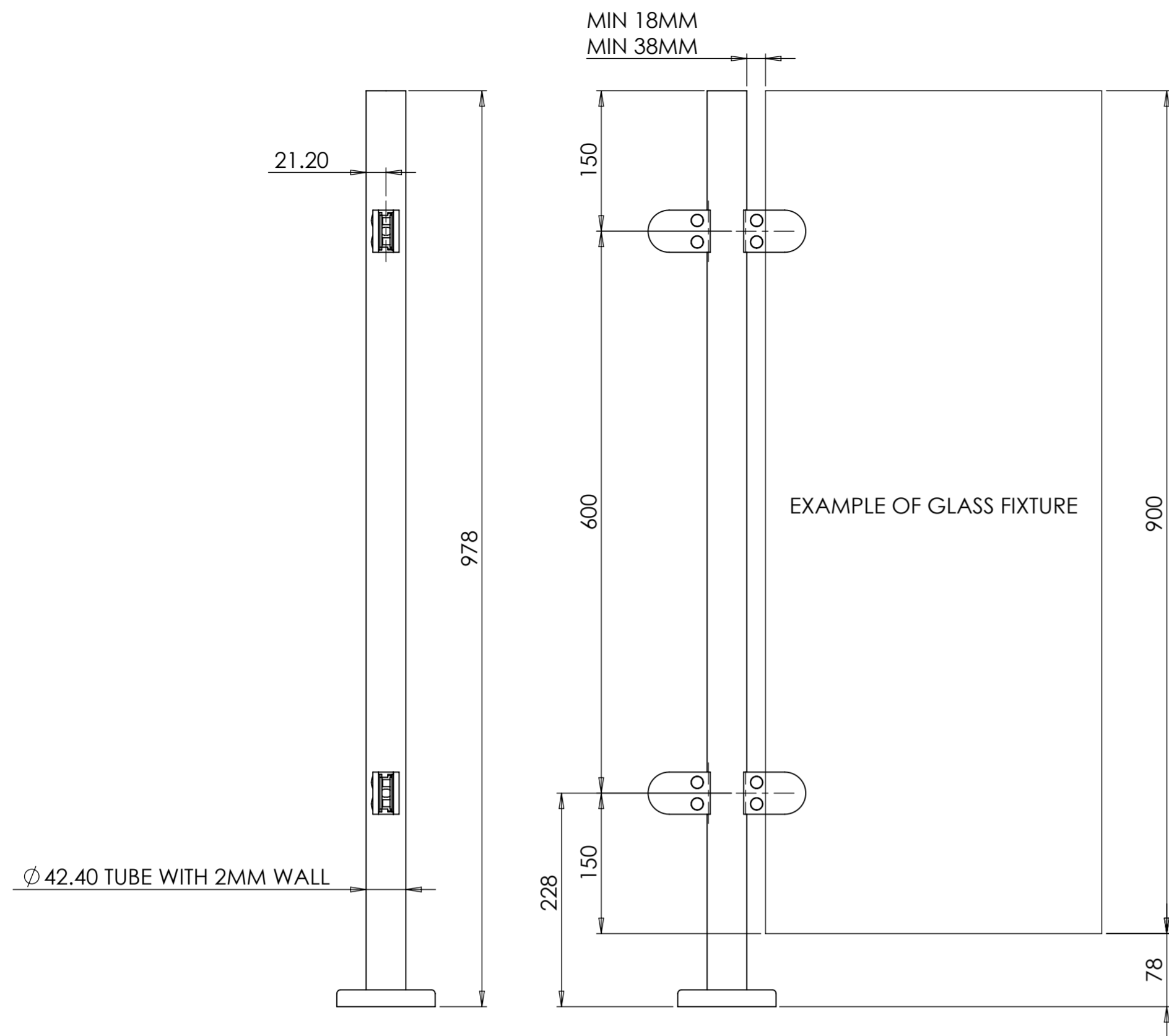
MATERIAL:  
316 Stainless Steel

FINISH:  
Polished

GRIT SIZE:  
320

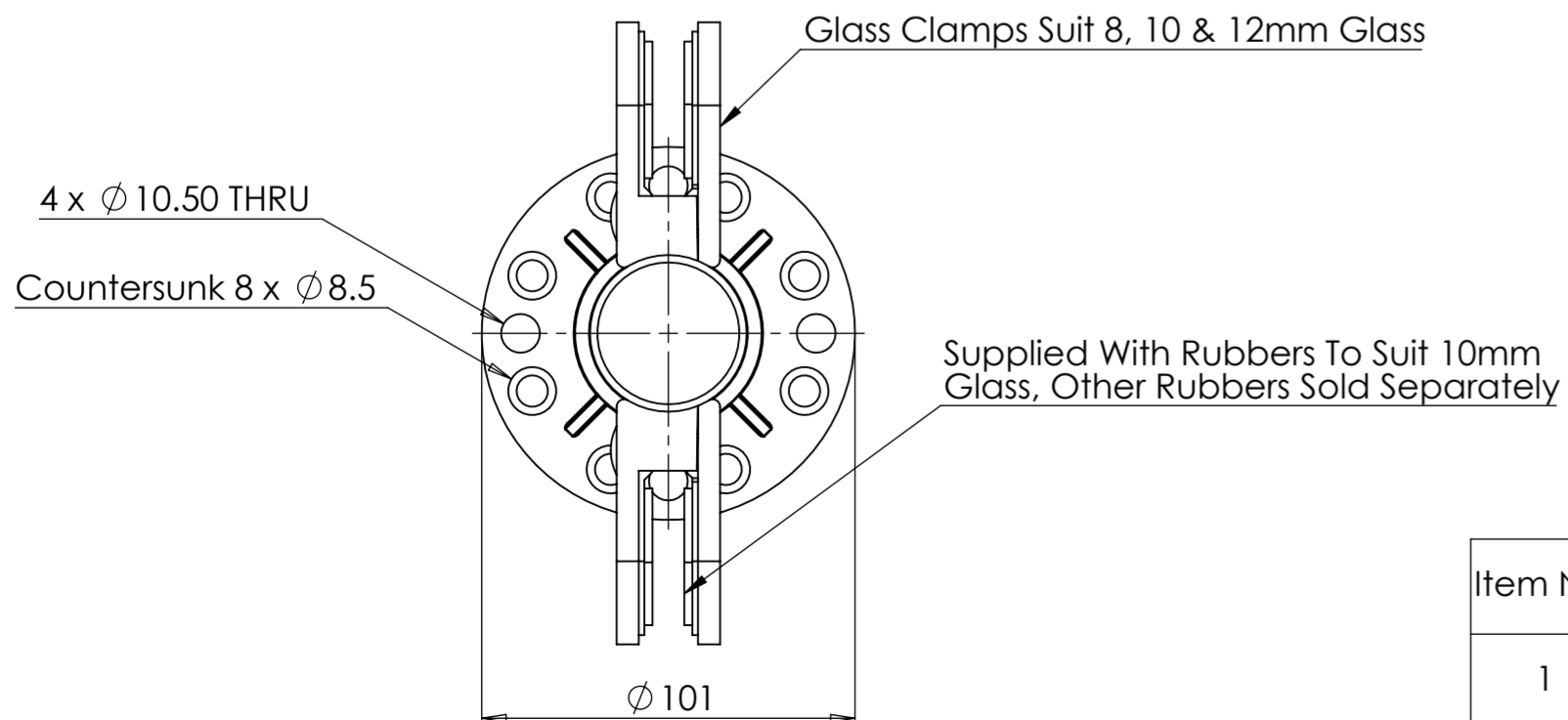
WEIGHT: 2.98 Kg

SCALE:1:10 DO NOT SCALE DRAWING SHEET 1 OF 1



**BasePlateDetail**

SCALE 1 : 2



Total Height Achieved	Optional End Part Code	Picture
983 mm	Flat Top - 1806214C	
984 mm	Raised Top - 1806215C	
999 mm	Dome Top - 1806216C	

Item No.	Part Code	Description	Material	Qty.
1	1806228C	Welded on Round Base Plate With 'O' Ring & Cover	316 Stainless	1
2	1806401C	Round Back Glass Clamps	316 Stainless	4

**Balustrade Heights Achieved With Different Fittings:**

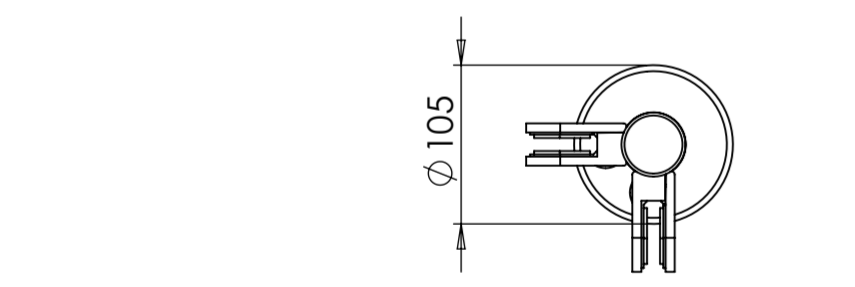
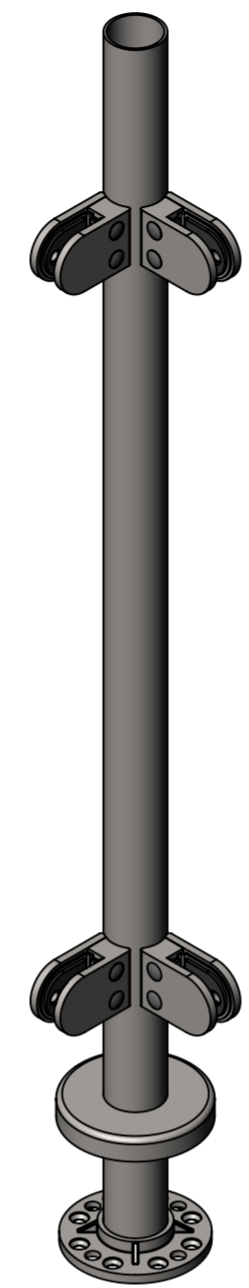
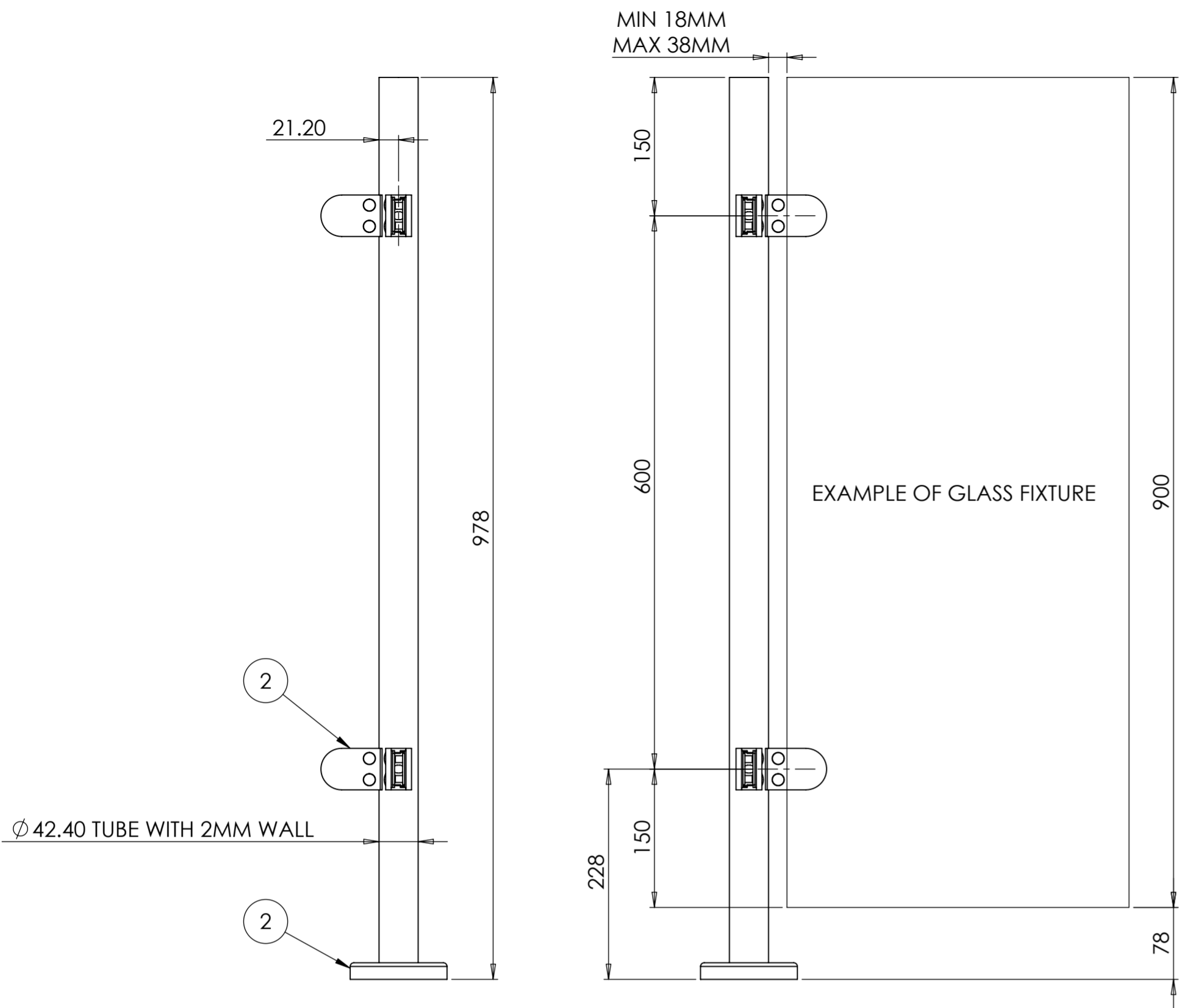
Total Height Achieved	Optional End Part Code	Picture
1100 mm To The Top Rail	Adjustable Spigot - 1806312CC	
1100 mm To The Top Rail	Fixed Spigot - 1806310CC	
1100 mm To The Top Rail	Corner Fixed Spigot - 1806311CC	
1025 mm To The Top Rail	Tube Adaptor - 1806313CC	
1029 mm To The Top Rail	Long Tee - 1806205C	
1029 mm To The Top Rail	3 Way Corner - 1806204C	
1058 - 1167 mm To The Top Rail	Adjustable Sleeve Fit - 1806316CC	
1100 mm To The Top Rail	Corner Support Bracket - 1806311CCA	
1100 mm To The Top Rail	Handrail Saddle, Adjustable Spigot - 1809504C	



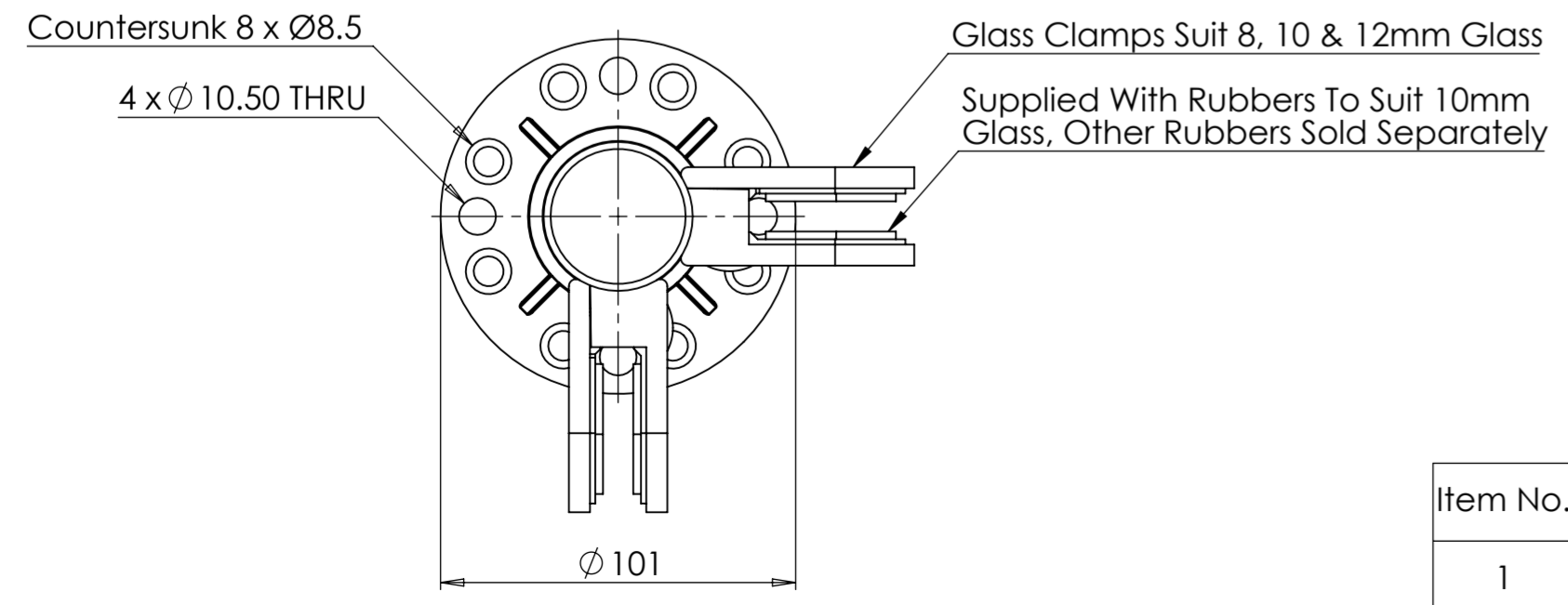
**Pro-Railing**  
Tel: 0121 565 8282  
Email: [prorailing@brundle.com](mailto:prorailing@brundle.com)  
Web: [www.prorailing.co.uk](http://www.prorailing.co.uk)

NOTES:  
Customer Drawing Information  
DESCRIPTION:  
42.4mm Base Fix Assembled Mid Post  
PART NO:  
1806792C  
DWG NO:  
NA  
SCALE:1:10  
DO NOT SCALE DRAWING  
SHEET 1 OF 1

UNLESS OTHERWISE SPECIFIED ALL DIMENSIONS ARE IN MILLIMETERS				MATERIAL: 316 Stainless Steel	GRIT SIZE: NA
FINISH: Polished	WEIGHT: 3.58 Kg	REVISION J	DATE 25/10/2016		
DRAWN LT	CHECKED EF	NAME LT	DATE 20/10/2016	REVISION J	DATE 25/10/2016



**Base Plate Detail**  
Scale 1 : 2



Total Height Achieved	Optional End Part Code	Picture
983 mm	Flat Top - 1806214C	
984 mm	Raised Top - 1806215C	
999 mm	Dome Top - 1806216C	

Item No.	Part Code	Description	Material	Qty.
1	1806228C	Welded on Round Base Plate With 'O' Ring & Cover	316 Stainless	1
2	1806401C	Round Back Glass Clamps	316 Stainless	4

**Balustrade Heights Achieved With Different Fittings:**

Total Height Achieved	Optional End Part Code	Picture
1100 mm To The Top Rail	Adjustable Spigot - 1806312CC	
1100 mm To The Top Rail	Fixed Spigot - 1806310CC	
1100 mm To The Top Rail	Corner Fixed Spigot - 1806311CC	
1025 mm To The Top Rail	Tube Adaptor - 1806313CC	
1029 mm To The Top Rail	Long Tee - 1806205C	
1029 mm To The Top Rail	3 Way Corner - 1806204C	
1058 - 1167 mm To The Top Rail	Adjustable Sleeve Fit - 1806316CC	
1100 mm To The Top Rail	Corner Support Bracket - 1806311CCA	
1100 mm To The Top Rail	Handrail Saddle, Adjustable Spigot - 1809504C	



**Pro-Railing**  
Tel: 0121 565 8282  
Email: prorailing@brundle.com  
Web: www.prorailing.co.uk

NOTES:  
Customer Drawing Information

DESCRIPTION:  
42.4mm Base Fix Assembled Corner Post

PART NO:  
1806793C

DWG NO:  
NA

SCALE:1:5

DO NOT SCALE DRAWING

SHEET 1 OF 1

UNLESS OTHERWISE SPECIFIED ALL DIMENSIONS ARE IN MILLIMETERS

NAME	DATE	REVISION
LT	20/10/2016	
EF	25/10/2016	J

MATERIAL: 316 Stainless Steel  
FINISH: Polished  
GRIT SIZE: NA  
WEIGHT: 3.58 Kg