

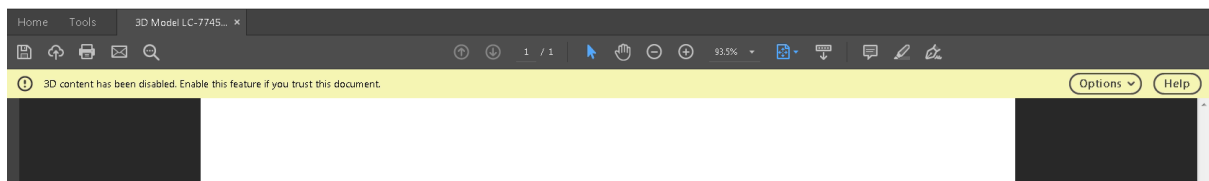
Viewing 3D Models

You will require Adobe Acrobat Reader

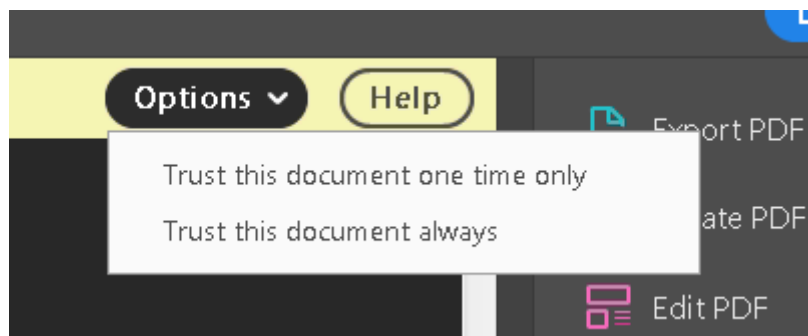
Option 1

To open just one time

1 When you receive your email, one of the attachments will be a .pdf of your model in 3D. To open the .pdf you should double click the .pdf which should open something like this...



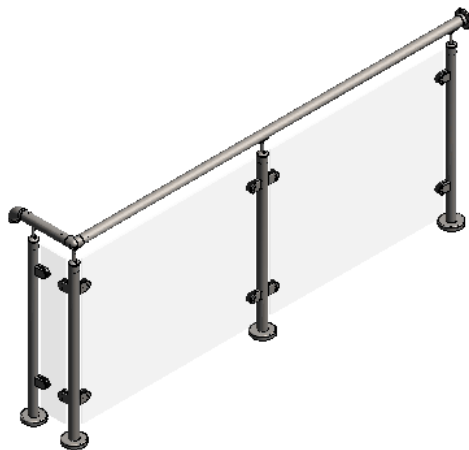
2 Next, please click the **Options** button to open the grey box like this...



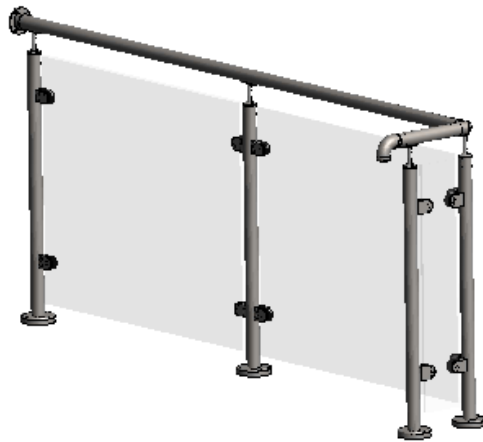
3 Then please click on the option: '**Trust this document one time only**'. If you then move your cursor arrow onto the white screen an icon of a hand will appear.

4 Please click onto the white part of the screen. This will show a little icon of a watch.

5 After a short pause, the drawing you have designed will appear.



6 You can then move your drawing around by clicking and holding down your left mouse button to view your drawing from different angles. Examples below.



Option 2

Always open automatically

It is possible to open the 3D models automatically, by clicking on the **Edit** button near the top left of your screen and going to the bottom of the drop-down list and clicking on **Preferences**. (See Fig. 1 below.)

When Preferences opens, please look on the list on the left and select **3D & Multimedia**, and tick **Enable playing of 3D content**, followed by **OK** at the bottom of the box. (See Fig. 2 below.)

Hopefully this will save time if you regularly need to view 3D models.

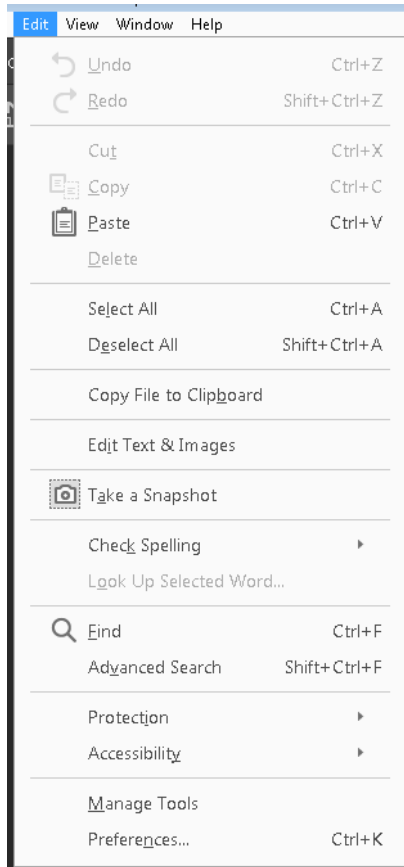


Fig. 1

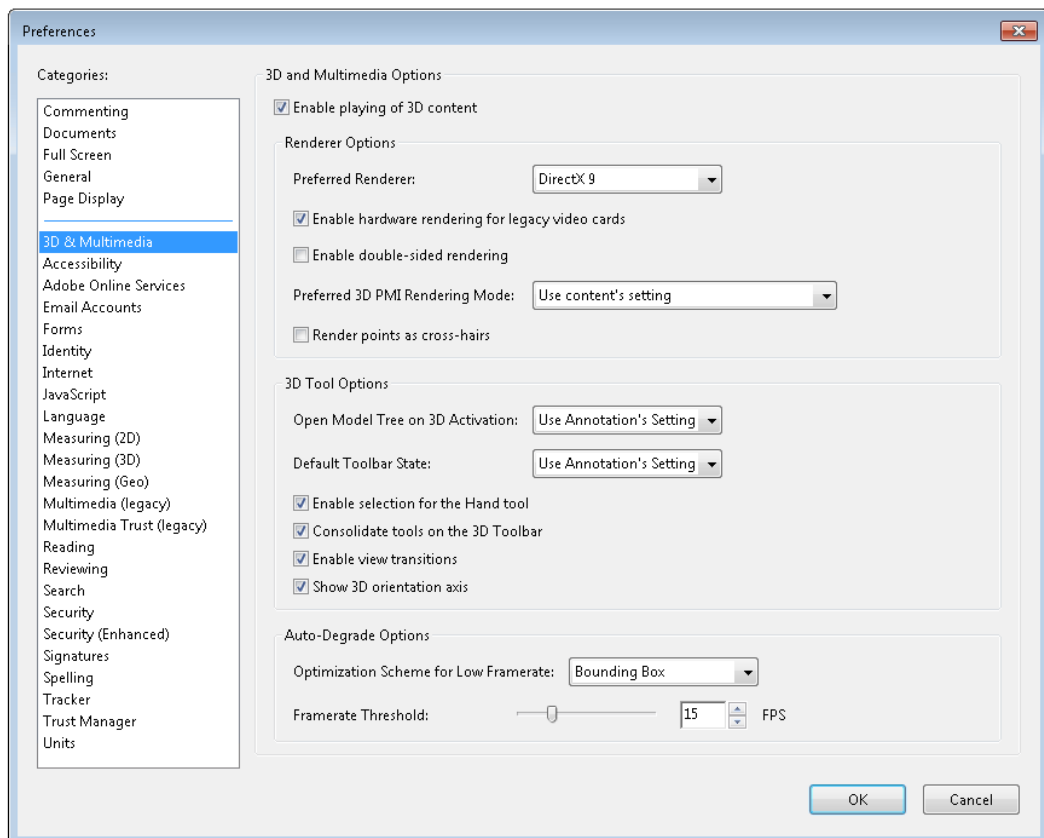


Fig. 2

Any Questions?

If you have any questions which are not covered here or in our Frequently Asked Questions, please contact one of our branches around the UK and speak to one of our team, who will be happy to help, or email: info@liveconfigurator.co.uk

Rainham	Tel: 01708 25 35 45	Fax: 01708 25 35 50
Southampton	Tel: 023 8070 3333	Fax: 023 8070 5555
Ilkeston	Tel: 0115 930 2070	Fax: 0115 951 2455
Birmingham	Tel: 0121 565 8282	Fax: 0121 565 8292
St Helens	Tel: 01942 86 88 88	Fax: 01942 86 88 99
Glasgow	Tel: 0141 773 6699	Fax: 0141 773 6633

You can also visit our other websites at: <http://www.prorailing.co.uk> or <http://www.fhbrundle.co.uk>